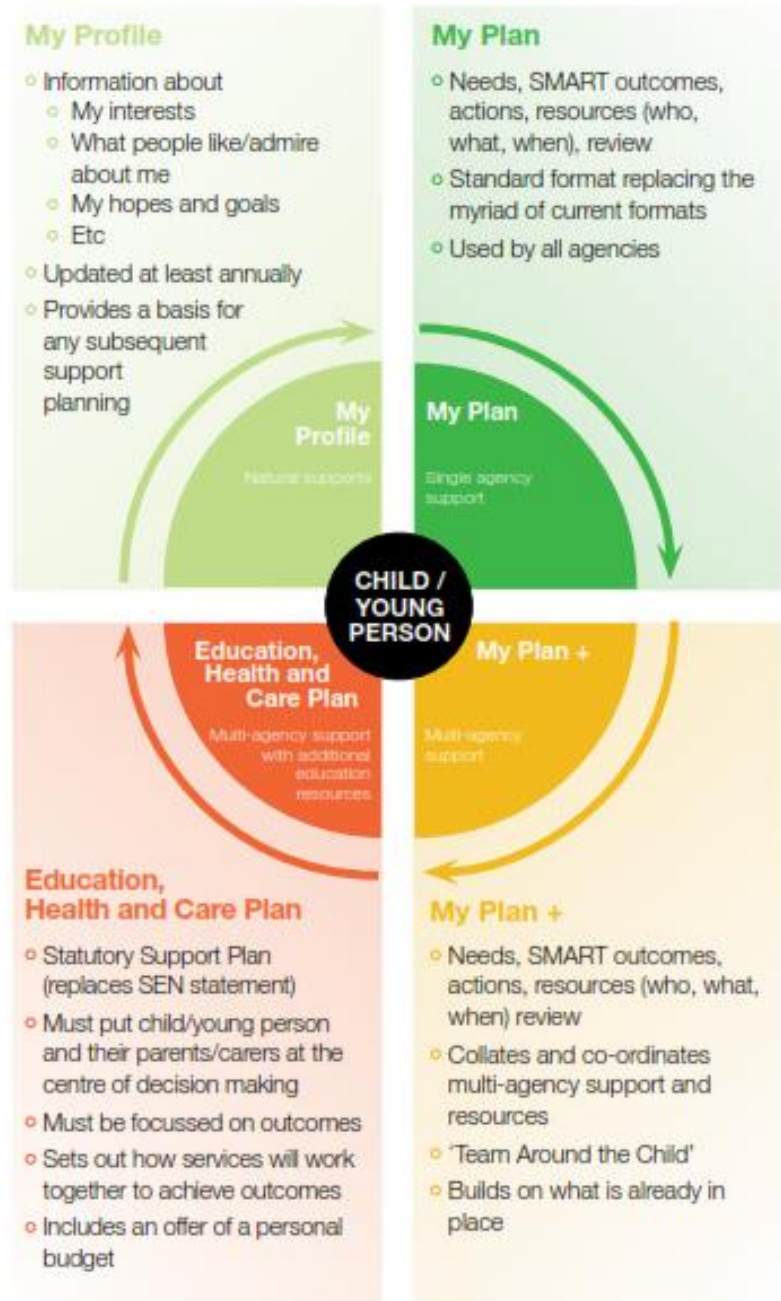




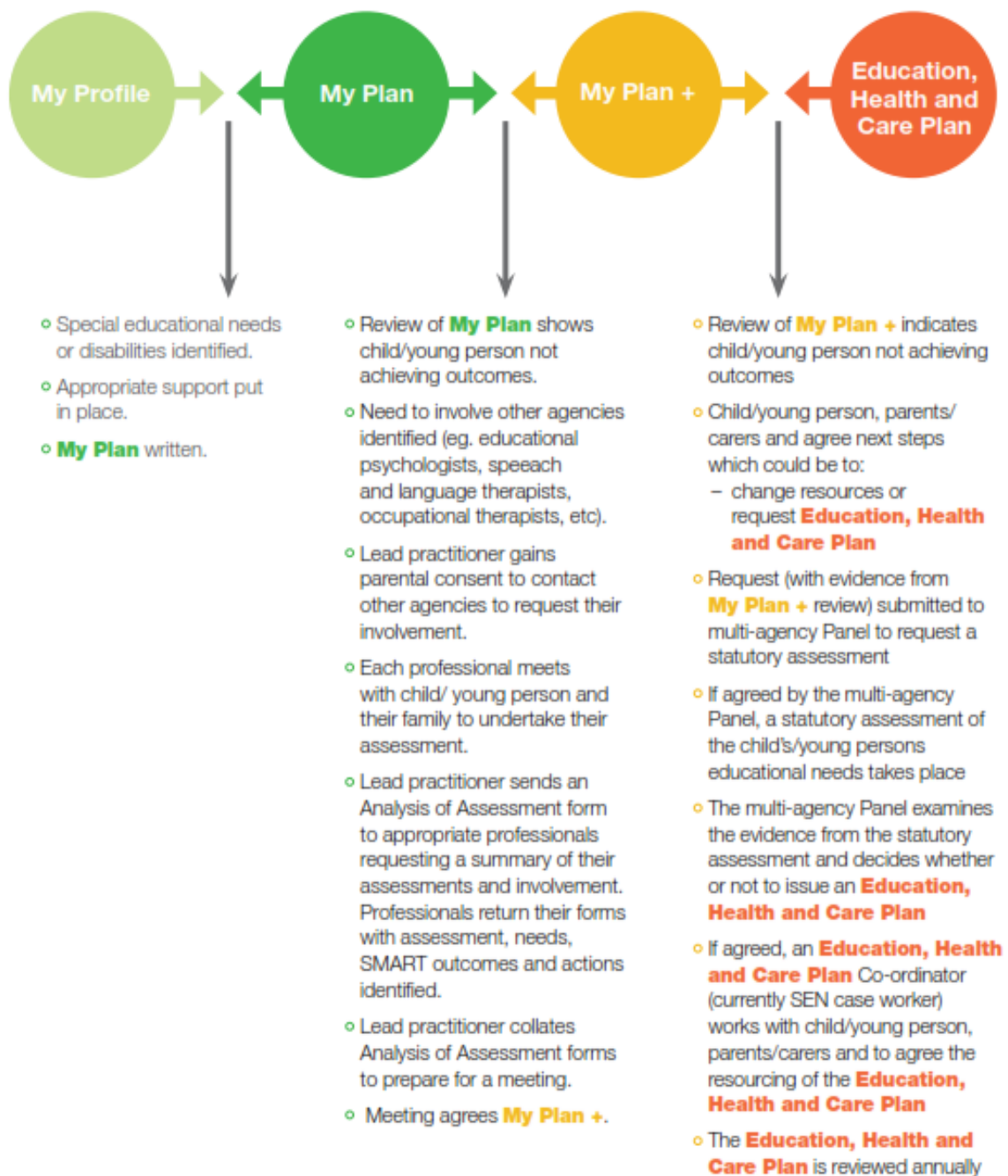
# Principles of the graduated approach:

- ✓ Helping people to help themselves
- ✓ A local offer to make it as easy as possible for people to find what they require to meet the needs of children and young people without needing or wanting professional support
- ✓ A single, integrated and graduated pathway from self-directed support through to Education and Health Care Plans
- ✓ Processes designed to synchronise planning and commissioning - across health, education and social care
- ✓ A journey for all children with additional needs that is a partnership between children, young people, parents, carers, professionals
- ✓ A commitment to share full information with children, young people, parents and carers
- ✓ Transparency at all stages in decision making and resource allocation

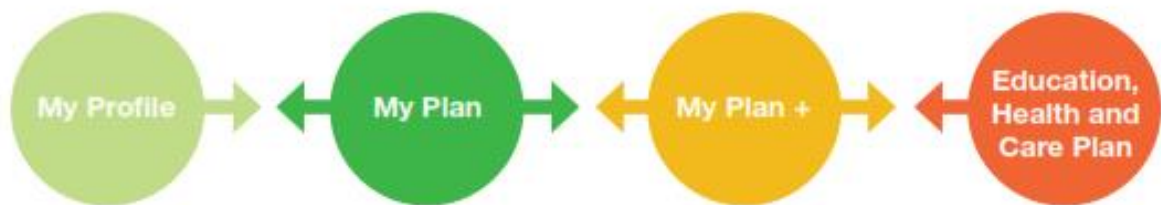
## The Graduated Plans for Gloucestershire



## The pathway for the graduated and integrated approach







Throughout the graduated and integrated approach there needs to be an open conversation with families and everyone involved about the following:

**Person centred  
open conversation  
with families**



- ✓ Agreeing the lead professional
- ✓ Co-ordinating the assessment information
- ✓ Completing an integrated needs analysis
- ✓ Agreeing a single list of outcomes
- ✓ Considering the resources available
- ✓ Including the resources for personal budgets, where available
- ✓ Identifying options for achieving the outcomes
- ✓ Not just standard solutions - informal support and community solutions
- ✓ Costing the options and evaluating the risks/benefits of each
- ✓ Drafting a plan to achieve SMART outcomes within available resources



At all points throughout the graduated pathway children will achieve outcomes which may enable the amount of support to reduce and a **My Plan +**, for example, could change into a **My Plan**. It is important that the integrated process is viewed as a flexible and dynamic one that matches provision to current need, for example, children could move from a resource such as a special school into a mainstream school with appropriate support.